

Important Information for WIC Visits

Please Bring the Following:

- ◆ Family members to be certified
- ◆ Identification
- ◆ Proof of Income
- ◆ Proof of Address

Please call for more information on what documents can be used for WIC eligibility. WIC does not require proof of citizenship.



Public Health
Prevent. Promote. Protect.

Champaign-Urbana Public Health District
www.c-uphd.org

"If not for WIC I probably would have given up breast feeding."

Saifei,
Yong, &
Sussannah
(Urbana)



About WIC

WIC is a supplemental food, nutrition, and resource referral program for pregnant and postpartum women, infants, and children up to age 5.

Eligibility

To be eligible for WIC you must meet income guidelines and have a medical or nutritional risk. Contact us today to find out if you are eligible!



"It's nice to have extra support in addition to the doctor's office."
Amanda, Madelynn, & Sophia (Urbana)

Breastfeeding Support

Our Certified Lactation Counselors and IBCLC help WIC moms with questions or concerns about breastfeeding. We also distribute Medicaid-covered breast pumps and limited loaner pumps.

For more information, contact Jennifer Lotton
(217) 531-4323

Women, Infants, and Children (WIC)

Champaign-Urbana Public Health District



Aisha & Makiyah (Rantoul)

Champaign Clinic

201 W. Kenyon Rd., C
(217) 531-4529

By Appointment

Mon-Fri: 8:30am-4:30pm

3rd Sat: 10:00am-1:00pm

Rantoul Clinic

520 E. Wabash St., R
(217) 893-0832

By Appointment

Tuesday and Friday
8:30am-4:30pm

This institution is an equal opportunity provider

www.facebook.com/WIC.Champ

WIC Income Eligibility Guidelines

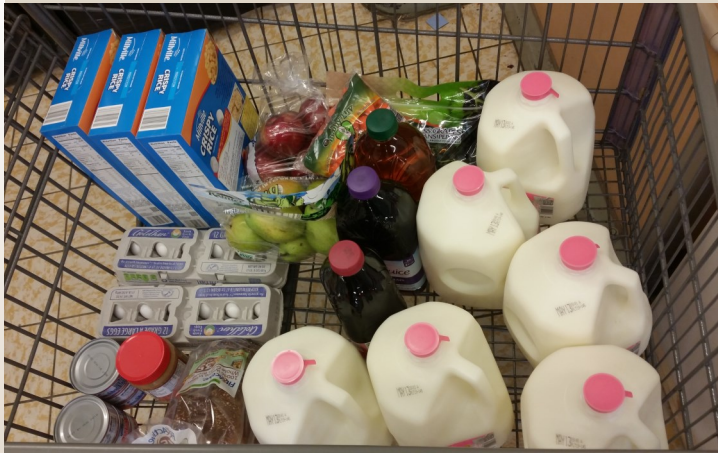
Effective July 1, 2022*

Household Size	Annual Income	Monthly Income	Weekly Income
1	\$25,142	\$2,096	\$484
2	\$33,874	\$2,823	\$652
3	\$42,606	\$3,551	\$820
4	\$51,338	\$4,279	\$988
5	\$60,070	\$5,006	\$1,156
6	\$68,802	\$5,734	\$1,324
For each additional person	\$8,732	\$728	\$168
*Income guidelines change annually.			



"WIC has been extremely beneficial."
Sara, Peyton, & Kyrie (Champaign)

WIC Foods



WIC foods provided depend upon the needs of each mom and child, including:

- Infants: Baby Fruits and Vegetables; Infant Cereal; Infant Formula; Jarred Meats*
- Women & Children: Milk; Cereal; Juice; Beans and/or Peanut Butter; Cheese, Tofu, Yogurt; Eggs; Fresh, Frozen, or Canned Fruits & Vegetables; Whole Grains; Tuna or Salmon*

*For exclusive breastfeeding participants

Other Services

- Family Case Management Program
- GREAT Start Home Visiting Program
- Birth Control, Pregnancy Tests
- Child Immunizations
- Flu & COVID-19 Vaccines
- Genetics Referrals
- HealthWorks

Additional WIC Benefits

Temp. Increase in Fruit and Vegetable Benefit

WIC temporarily increased the monthly cash value benefit for fruits and vegetables through September 2022. Take advantage and enroll in WIC today!

Farmers' Market Vouchers

WIC provides each active participant with **\$30** in farmers' market vouchers every summer. Distribution begins late July 2022, and vouchers can be redeemed at Champaign or Urbana's farmers' markets until October 31, 2022.



"The attention and the help are great."
Mayra & Owen (Urbana)